

SPECIFICATIONS							
	CH1	CH2	CH3	CH4	CH5	CH6	CH7
FREQUENCY (GHz)	1.25-1.35	1.25-1.35			1.025-1.035 1.085-1.095		
VSWR (MAX)	1.2:1	1.3:1	1.3:1	1.3:1	1.3:1	1.3:1	1.3:1
VSWR WOW (MAX)	0.05	0.05	0.1	0.1	0.08	0.08	0.08
INS. LOSS (Db MAX)	0.2	1.2	1.1	0.9	0.8	0.8	0.8
INS. LOSS WOW (dB MAX)	0.1						
LOSS DIFFERENCE (dB MAX)					0.2	0.2	0.2
PHASE WOW (DEG. MAX)	2.5	2.5	2.5	2.5	2.5	2.5	2.5
PHASE TRACKING (DEG. MAX)					2	2	2
INSERTION PHASE					2.019 ±0.015M	+/- 5 DEG TO CH 5	+/- 5 DEG TO CH 5
PEAK POWER (KW) (NO PRESSURE 2:1 LOAD)	2000	10	10	10	10	10	10
AVG. POWER (W) (NO PRESSURE 2:1 LOAD)	6000	30	30	30	300	50	50
CHANNEL ISOLATION (MIN)					50		

ROTATION SPEED: 10 RPM MAX
 TORQUE: 2Kgm (14 FT LBS)
 LIFE @ 10 RPM: 120 MILLION REVS
 TEMP: -40° - +70°C
 MATERIAL: ALUMINUM
 FINISH: TBD
 PAINT: TBD
 WEIGHT: 220 lbs MAX, 210 TYP
 PRESSURE: 15 PSIG
 LEAKAGE (MAX): 50 CC/MIN
 MASK CONNECTORS & SURFACES MARKED Δ

ROHS COMPLIANT

SLIP RING SPECIFICATIONS (GENERAL)	
NO. OF CHANNELS:	20
VOLTAGE:	220V +/-10%
CURRENT:	10A MAX
ISOLATION:	500 CHMS @ 500VDC
CROSS TALK:	< 10 dB FOR AN APPLIED SIGNAL @ 10 MHz, 1 V pp ON NEXT CHANNEL.
LIFE:	25000 HOURS @5 RPM

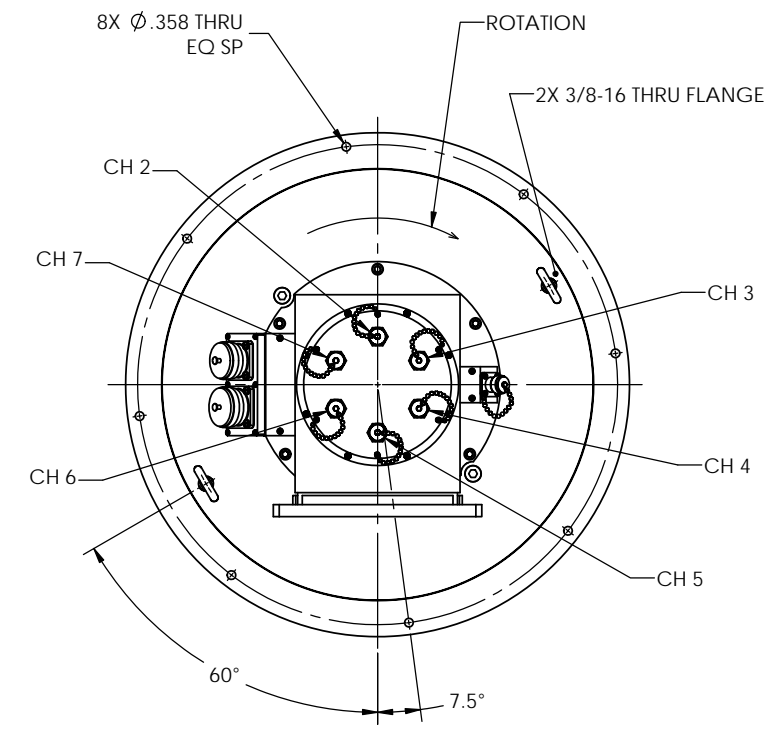
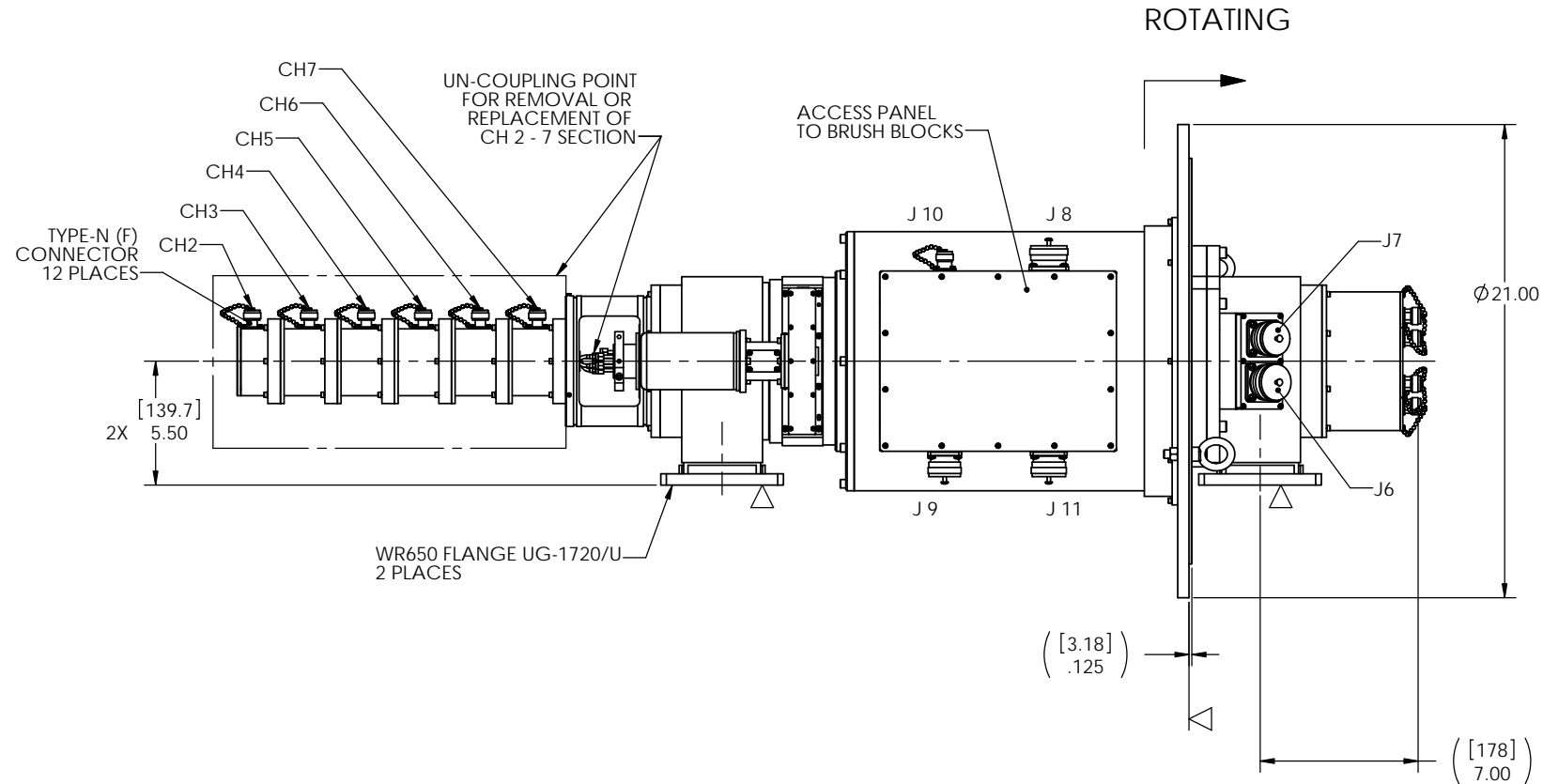
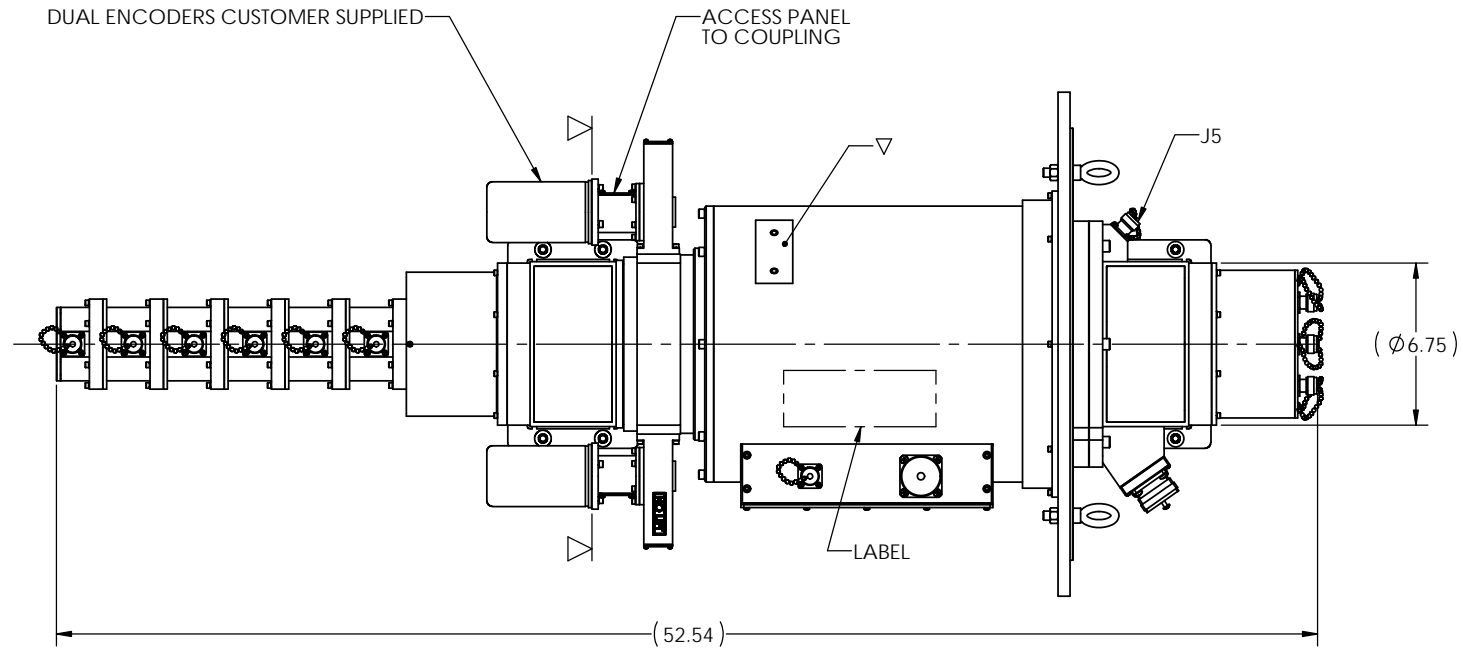
SLIP RING SPECIFICATIONS (SLS GATE CKT)	
FREQUENCY:	DC - 30 MHz
IMPEDANCE:	50 Ohms
ISOLATION:	<10dB FOR AN APPLIED SIGNAL TO 30 MHz, 1 Vpp ON NEXT CHANNEL.
INSERTION LOSS:	<0.5 dB @ 30 MHz

WIRE RUN LIST				
STATOR	SLIP RING	ROTOR		
J10	GND 1	GND	J5	
TYPE-N (F)	C/C 2	C/C	TYPE-N (F)	
(SLS GATE CKT)	GND 3	GND	(SLS GATE CKT)	
J8	E 5	E	J6	
MS17346R22N-19P	D 7	D	MS17346R22N-19S	
	A 9	A		
	B 11	B		
	C 13	C		
	G 15	G		
	H 17	H		
	J 19	J		
N 21	N			
J11	A 4	A	J7	
MS17346R20N-33P	B 6	B	MS17346R20N-33S	
	C 8	C		
	D 10	D		
	E 12	E		
	F 14	F		
NA 16	NA			
NA 18	NA			
NA 20	NA			
NA 22	NA			
NA 23	NA			

J8 & J6 PIN # F,K,L,M & P NOT USED

J11 & J7 PIN # H,J,K,L & M NOT USED

CONNECTOR	SWITCH	
J9	A	NC
MS17346R18N-22P	B	NO
	C	COM



THIRD ANGLE PROJECTION	DIAMOND ANTENNA & MICROWAVE CORP LITTLETON, MA 01460	
DIMENSIONS ARE IN INCHES. REMOVE ALL BURRS AND SHARP EDGES .005 MAX. UNLESS OTHERWISE SPECIFIED. SURF FINISH 63 TOLERANCES ARE: FRACTIONS DECIMALS ANGLES 2 PLACES 0.01 0.1/2 3 PLACES 0.010 0.125	TITLE: 7 CHAN RJ WITH 20 CHAN SLIP RING	
SIZE: D	CAGE CODE: 01882	DRAWING NUMBER: CAT 10-2700-0
SCALE: 1:4	WEIGHT (EST.):	SHEET 1 OF 1