

**W/G AND COAX SPECIFICATIONS**

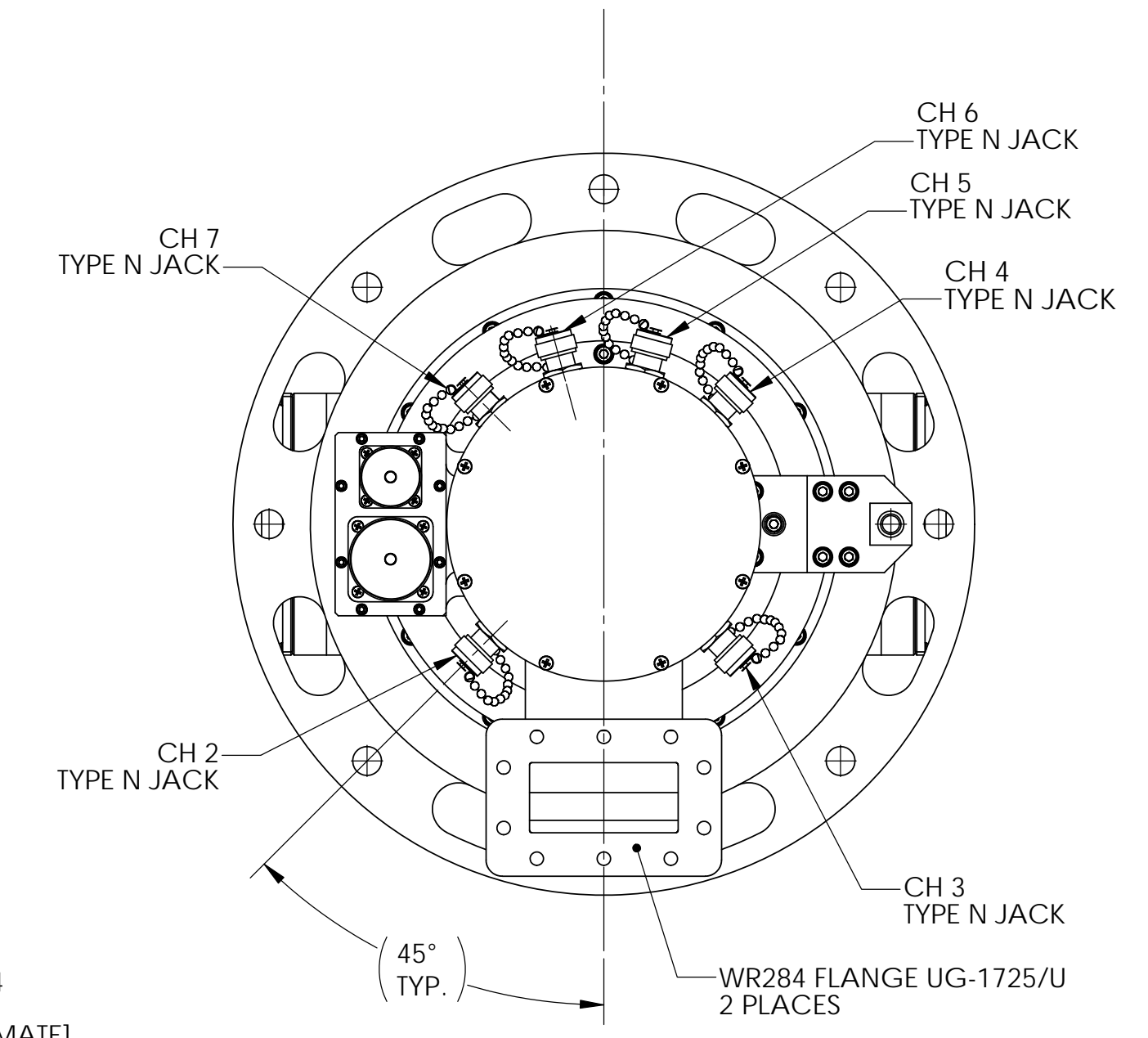
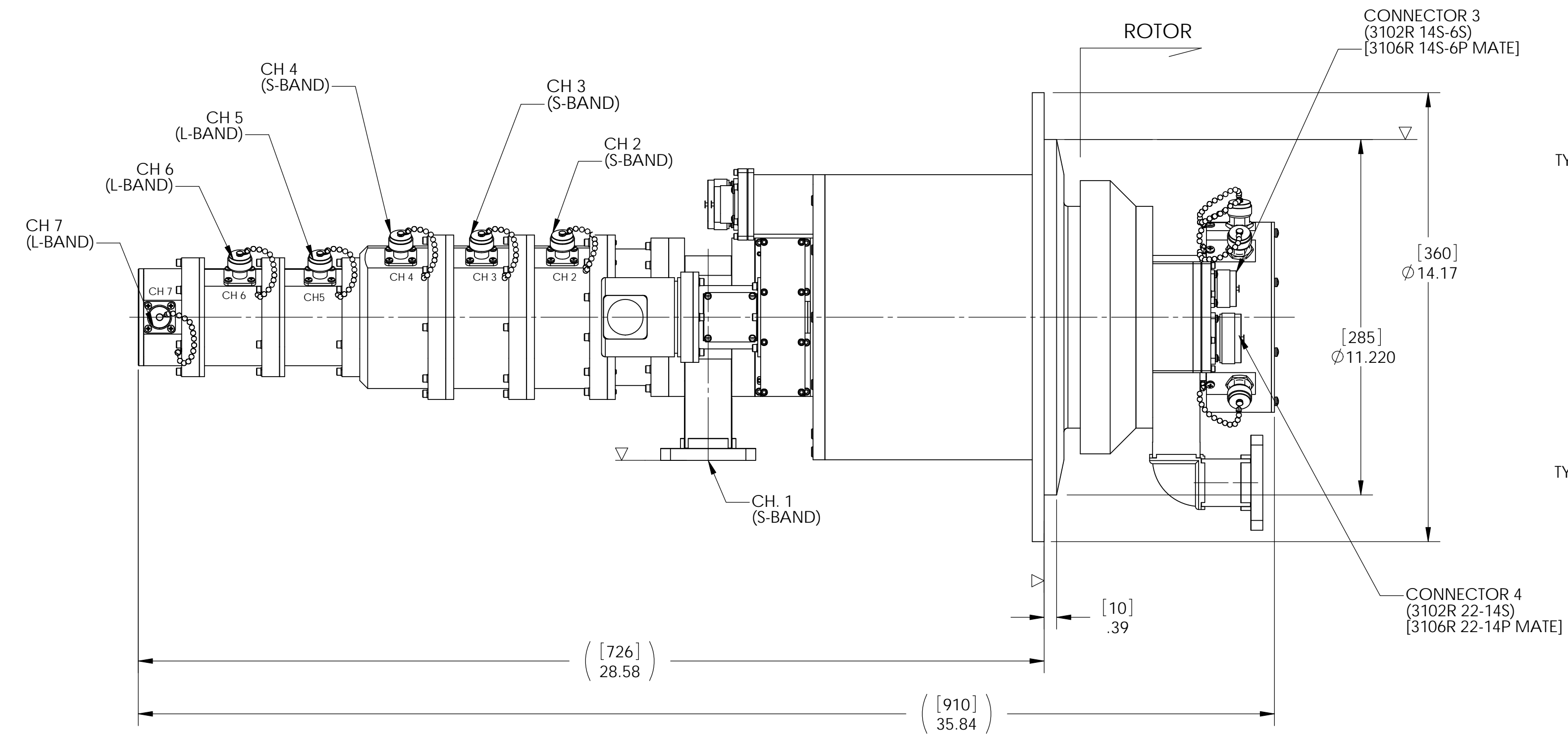
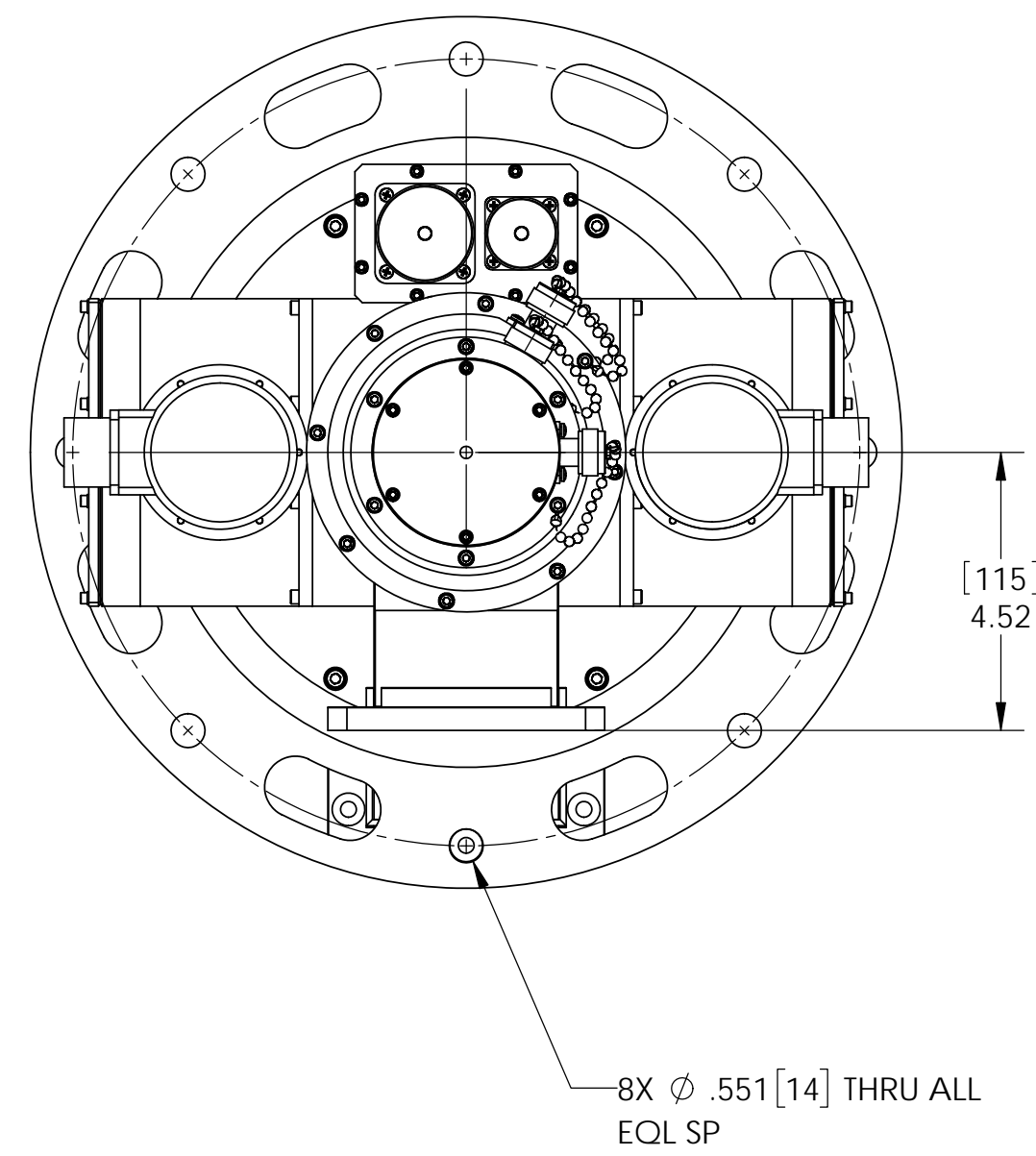
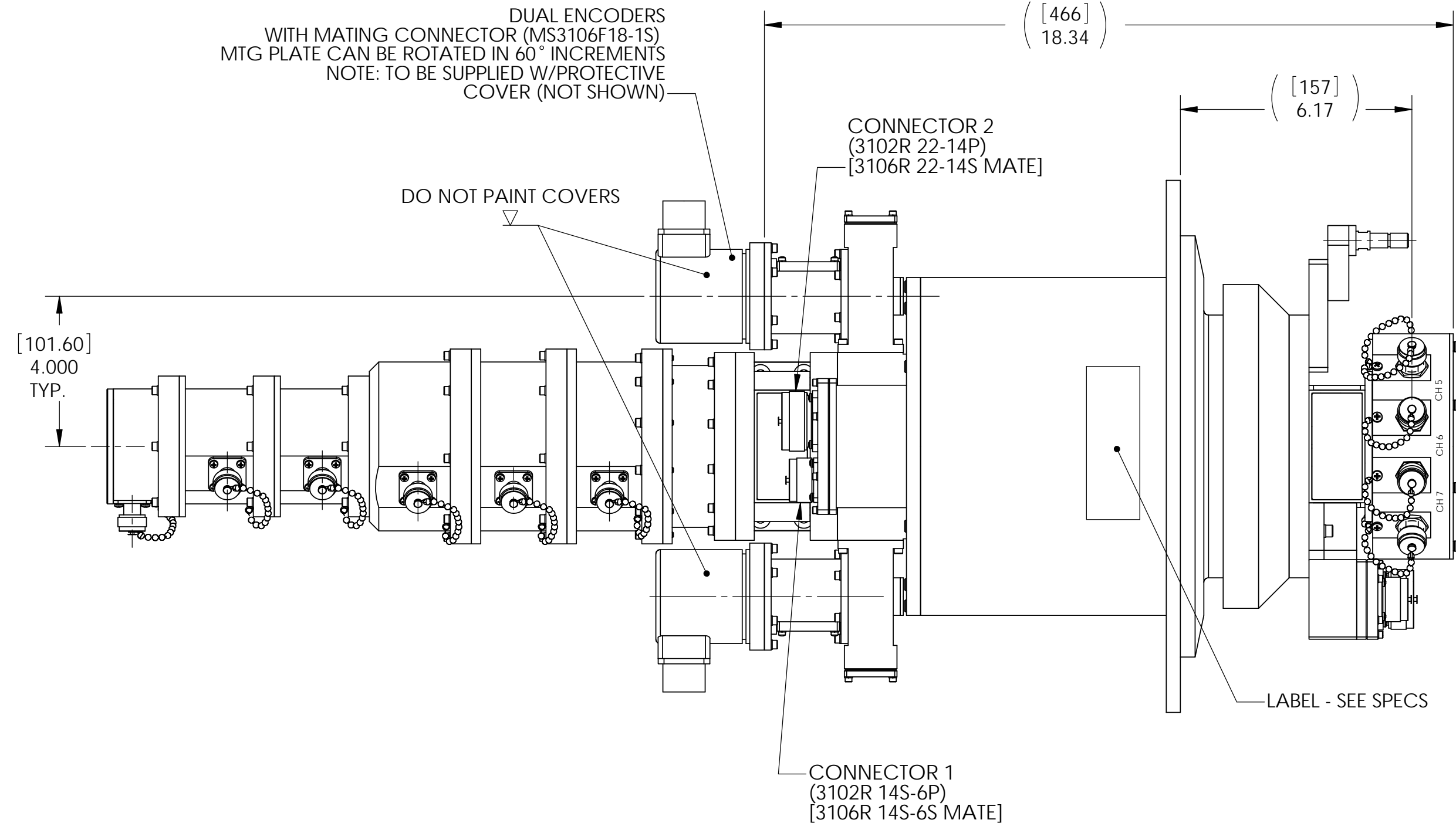
	CH 1	CH 2	CH 3	CH 4	CH 5	CH 6	CH 7
FREQUENCY (GHz):	2.7 TO 2.9	2.7 TO 2.9	2.7 TO 2.9	2.7 TO 2.9	1.01 TO 1.11	1.01 TO 1.11	1.01 TO 1.11
VSWR (MAX):	1.2:1	1.3:1	1.3:1	1.3:1	1.3:1	1.3:1	1.3:1
VSWR WOW (MAX):	0.06	0.06	0.06	0.06	0.06	0.06	0.06
INSERTION LOSS (dB MAX):	0.15	0.90	1.00	1.00	0.80	0.80	0.80
PHASE WOW:	-	1°	1°	1°	1°	1°	1°
PEAK POWER (kW):	35	5	5	5	5	5	5
MEAN POWER:	3000W	75W	75W	75W	150W	150W	150W
PHASE TRACKING (L-BAND COAX ONLY):	±2° MAX BETWEEN CHANNELS 5, 6 & 7						
ISOLATION:	60dB BETWEEN CHANNELS						
WEIGHT:	(APPROX WEIGHT 70 LBS)						
TEMPERATURE (OPER):	-40° TO 70°C						
(STORAGE):	-55° TO 85°C						
HUMIDITY (RH):	100%						
INGRESS PROTECTION RATING:	IP 65						
PRESSURE:	POSITIVE PRESSURE TO 2 PSI						
LEAKAGE:	25cc/min MAX @ 5 PSI ACROSS OPER TEMP RANGE @ 10,000 FT ABOVE SEA LEVEL.						
ROTATION RATE:	15 RPM NOMINALLY						
LIFE EXPECTANCY:	50,000 HRS. @ 15 RPM MAX (CONTINUOUS)						
TORQUE:	15 FT-LBS MAX						
PAINT:	TBD						
MARKING:	LABELS TO INCLUDE: DIAMOND PART NO. REVISION SERIAL NUMBER						

**ROLL-RING SPECIFICATIONS:**

NO. OF CHANNELS:	24 (ALL CHANNELS IDENTICAL)
VOLTAGE:	120 VAC/24 VDC
CURRENT:	10 AMPS
ELECTRICAL ISOLATION:	500 MEGAOHMS @ 500 VDC BETWEEN ANY 2 CHANNELS

NOTE: ALL DIMENSIONS SHOWN AS REFERENCE ARE SUBJECT TO CHANGE.

ROHS COMPLIANT



THIRD ANGLE PROJECTION		DIAMOND ANTENNA & MICROWAVE CORP LITTLETON, MA 01460	
DIMENSIONS ARE IN INCHES. REMOVE ALL BURRS AND SHARP EDGES .005 MAX, UNLESS OTHERWISE SPECIFIED. SURF FINISH 63. TOLERANCES ARE: FRACTIONS DECIMALS ANGLES 2/164 3 PLACES 1.010 1/162		TITLE: MAIN ASSY	
SIZE: D	CAGE CODE: 01882	DRAWING NUMBER: CAT 10-2720-0	
SCALE: 1:3	WEIGHT (EST.):	SHEET 1 OF 1	