

DESIGN SPECIFICATIONS

ELECTRICAL

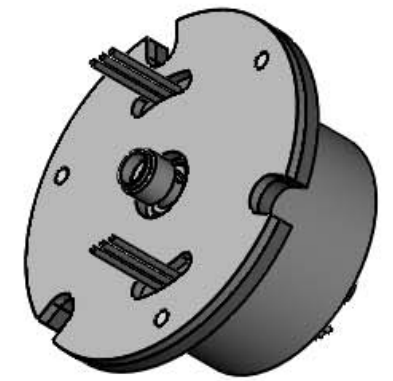
FREQUENCY (GHz):	DC-18
VSWR (MAX):	1.5:1
VSWR WOW (MAX):	0.05 dB
INSERTION LOSS (MAX):	0.3 dB
INSERTION LOSS WOW (MAX):	0.05 dB
POWER, PEAK:	5 KW
POWER, AVG (@ 1 GHz):	200 W

MECHANICAL & ENVIRONMENTAL

ROTATIONAL SPEED:	50 RPM NORMAL, 120 RPM MAX
TORQUE:	10 OZ.-IN. MAX
WEIGHT:	4 OZ. MAX
MATERIAL:	STAINLESS STEEL AND ALUMINUM
FINISH:	PASSIVATE AND CHROMATE CONV. COAT
MARKING:	TO INCLUDE AS A MIN. DIAMOND P/N & S/N APPLY LABEL APPROX. WHERE SHOWN

SLIP RING

NUMBER OF CIRCUITS:	6
CURRENT:	2 AMPS
VOLTAGE:	240 VAC
MATERIAL:	PLASTIC, ALUMINUM AND STAINLESS STEEL W/GOLD PLATED CONTACTS



ROHS COMPLIANT

THIRD ANGLE PROJECTION

DIMENSIONS ARE IN INCHES.
REMOVE ALL BURRS AND
SHARP EDGES .005 MAX,
UNLESS OTHERWISE
SPECIFIED, SURF FINISH 63
TOLERANCES ARE:
FRACTIONS DECIMALS ANGLES
±1/64 2 PLACES ±.03 ±1/2°
3 PLACES ±.010

INTERPRET DIMENSIONS &
TOLERANCES PER ASME Y14.5M

DIAMOND ANTENNA & MICROWAVE CORP
LITTLETON, MA 01460

TITLE:
ROTARY JOINT, 1 CH COAX, 6 CH SLIP RING

SIZE: B	CAGE CODE: 01882	DRAWING NUMBER: CAT 84-2124-0
SCALE 2:1	WEIGHT (EST.):	SHEET 1 OF 1