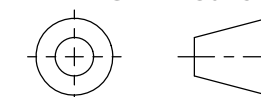


### DESIGN SPECIFICATIONS

FREQUENCY (GHz): DC - 18  
 VSWR (max): 1.50:1  
 VSWR WOW (max): 0.05  
 INSERTION LOSS (max): .30 dB  
 INSERTION LOSS WOW (max): .05 dB  
 POWER, PEAK (min): 5 KW  
 POWER, AVG (min @ 1 GHz): 200 W

ROTATIONAL SPEED: 50 RPM nom, 500 RPM max  
 TORQUE: 4 oz-in max, 2 oz-in nom  
 LIFE (min): 8,334 hrs @ 50 rpm = 25,000,000 REVS  
 WEIGHT: 2 oz  
 MATERIAL: PREDOMINANTLY STAINLESS STEEL AND BeCu  
 FINISH: PASSIVATION (SST) AND GOLD PLATING (BeCu)  
 MARKING: DIAMOND LABEL TO INCLUDE AS A MIN  
 DIAMOND P/N & S/N

THIRD ANGLE PROJECTION



DIMENSIONS ARE IN INCHES.  
 REMOVE ALL BURRS AND SHARP EDGES .005 MAX, UNLESS OTHERWISE SPECIFIED, SURF FINISH 63  
 TOLERANCES ARE:  
 FRACTIONS ±1/64 DECIMALS 2 PLACES ±.03 ANGLES ±1/2°  
 3 PLACES ±.010

INTERPRET DIMENSIONS & TOLERANCES PER ASME Y14.5M

**DIAMOND ANTENNA & MICROWAVE CORP**  
 LITTLETON, MA 01460

TITLE:  
**SINGLE CHANNEL, SMA, ROTARY JOINT**

SIZE: <b>B</b>	CAGE CODE: <b>01882</b>	DRAWING NUMBER: <b>CAT 101-2124-0</b>
-------------------	----------------------------	--

SCALE <b>3:1</b>	WEIGHT (EST.):	SHEET <b>1 OF 1</b>
---------------------	----------------	------------------------