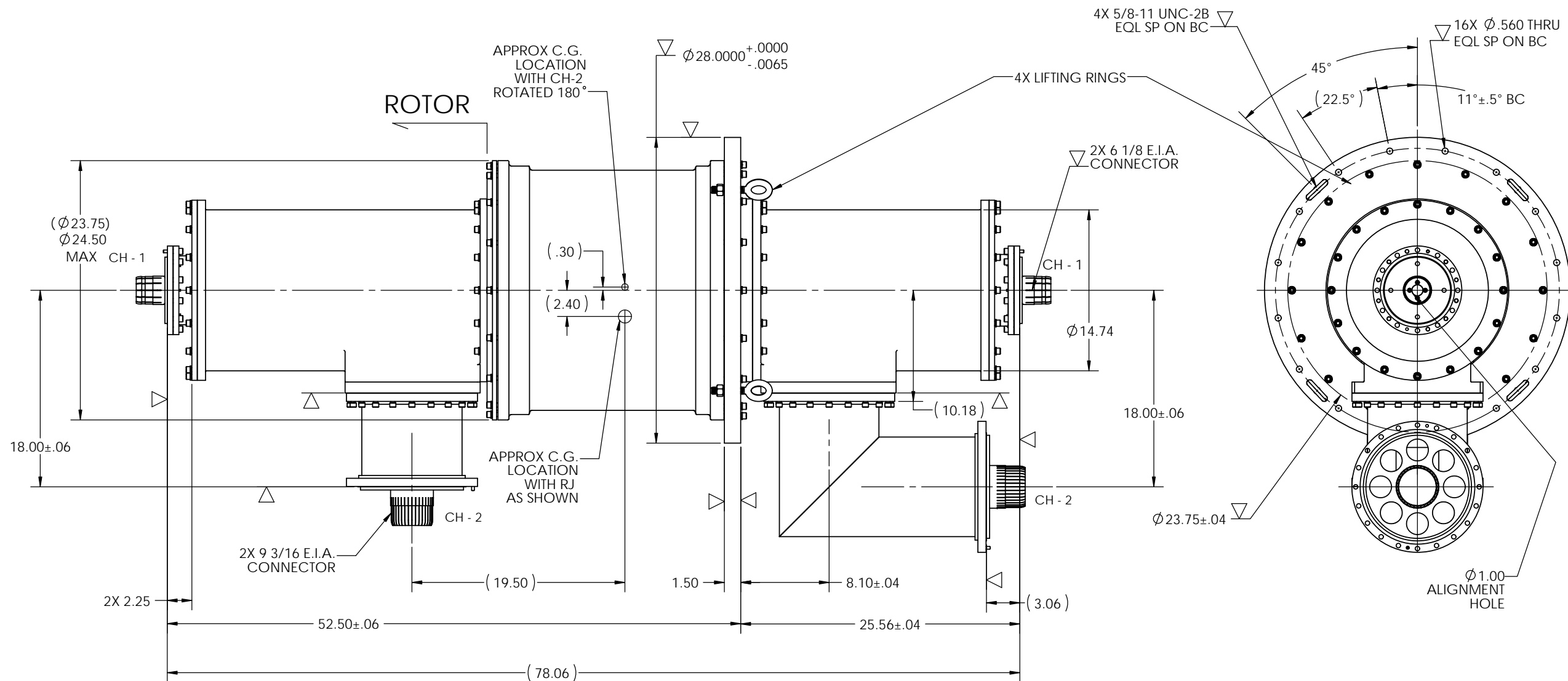


SPECIFICATIONS

PARAMETER	CH. 1-2
FREQUENCY (MHz)	UHF
VSWR	1.12
VSWR WOW	0.01
INSERTION LOSS (dB)	0.05
POWER * PEAK	8 MW
AVG	100 KW
ISOLATION (dB)	60
PRESSURE	40 PSIG MAX
OPER TEMP	79°F - 93°F (85°F AVG)
LEAK RATE	.01 SCFM (283/CC/MIN)
TORQUE	600 IN-LBS (50 FT-LBS)
ROTATION	2 RPM
MATERIAL	ALUMINUM, COPPER
FINISH	TBD
WEIGHT	MASK ALL CONNECTORS, HOLES & SURFACES INDICATED BY Δ
	750 LBS MAX

* IF BOTH CHANNELS 4 MW, 50 KW



THIRD ANGLE PROJECTION

DIMENSIONS ARE IN INCHES.
REMOVE ALL BURRS AND SHARP EDGES .005 MAX, UNLESS OTHERWISE SPECIFIED, SURF FINISH 63
TOLERANCES ARE:
FRACTIONS DECIMALS ANGLES
±1/64 2 PLACES ±.05 ±1/2°
3 PLACES ±.010

INTERPRET DIMENSIONS & TOLERANCES PER ASME Y14.5M

DIAMOND ANTENNA & MICROWAVE CORP LITTLETON, MA 01460			
TITLE: DUAL CHANNEL ROTARY JOINT ASSY			
SIZE: C	CAGE CODE: 01882	DRAWING NUMBER: CAT 2245-0	
SCALE 1:7	WEIGHT (EST.):	SHEET 1 OF 1	