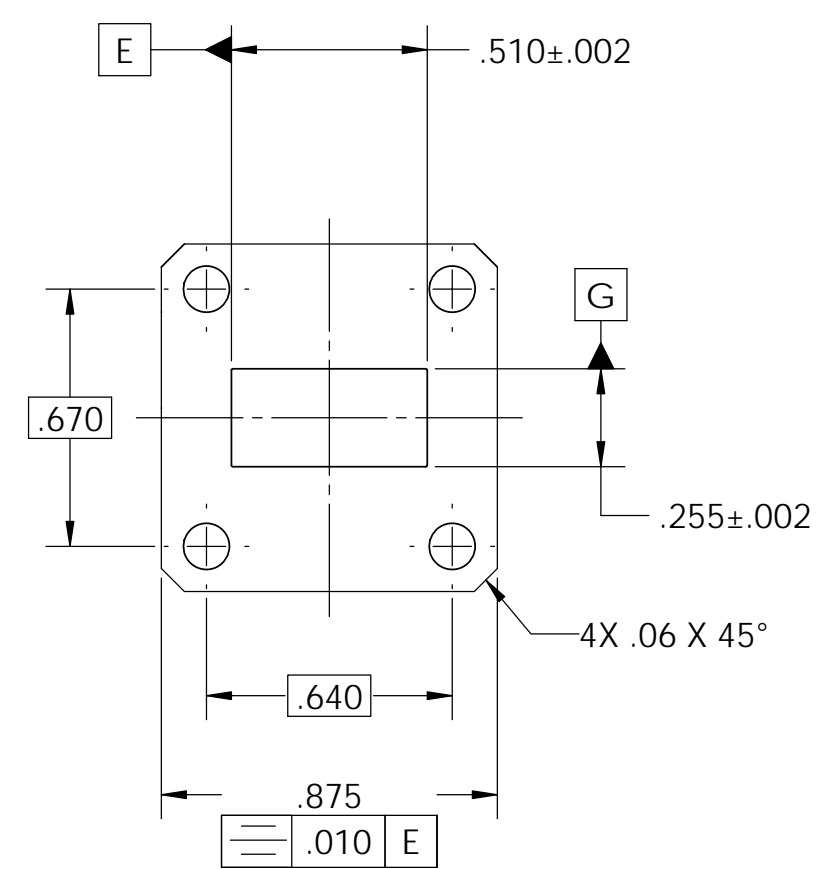
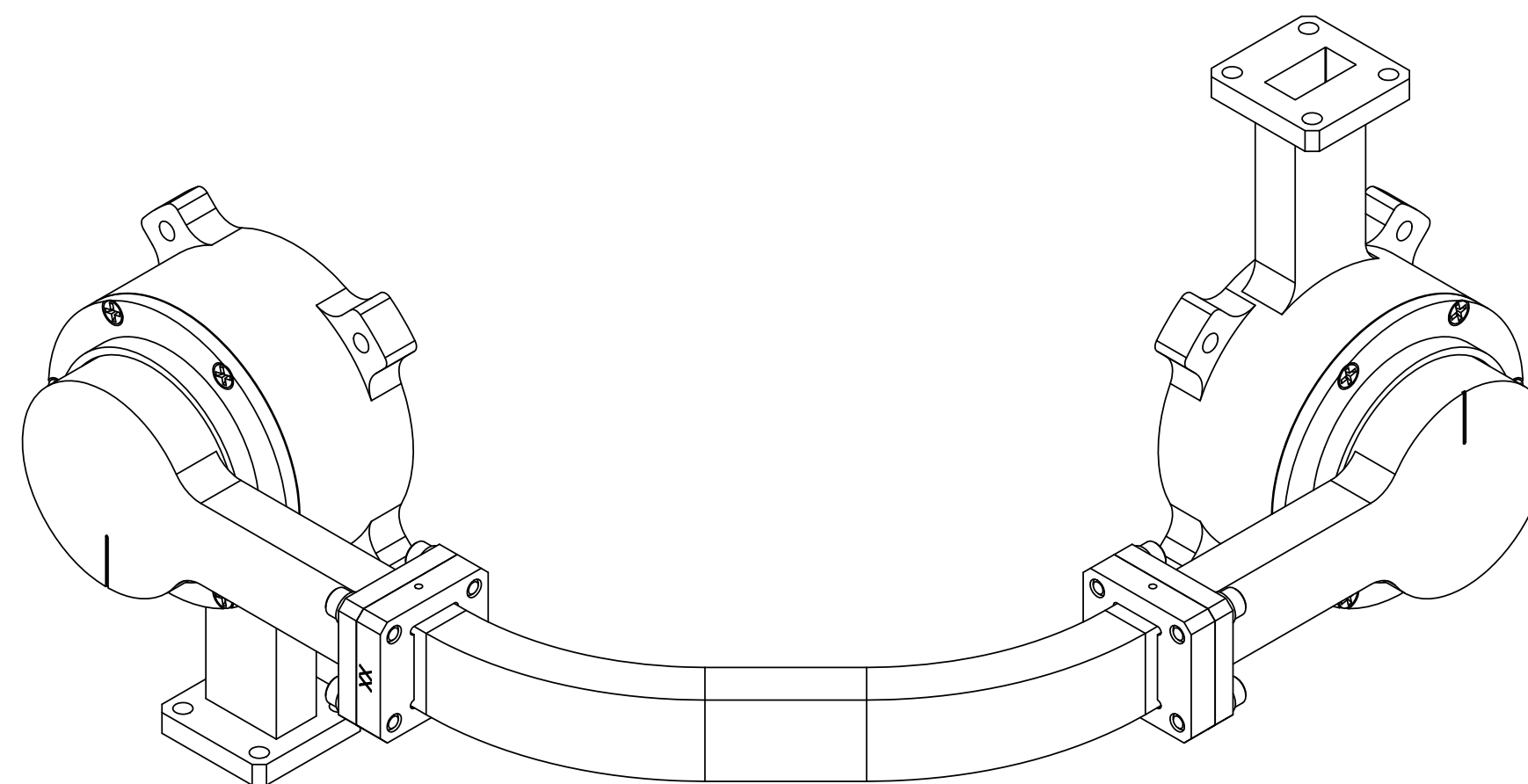
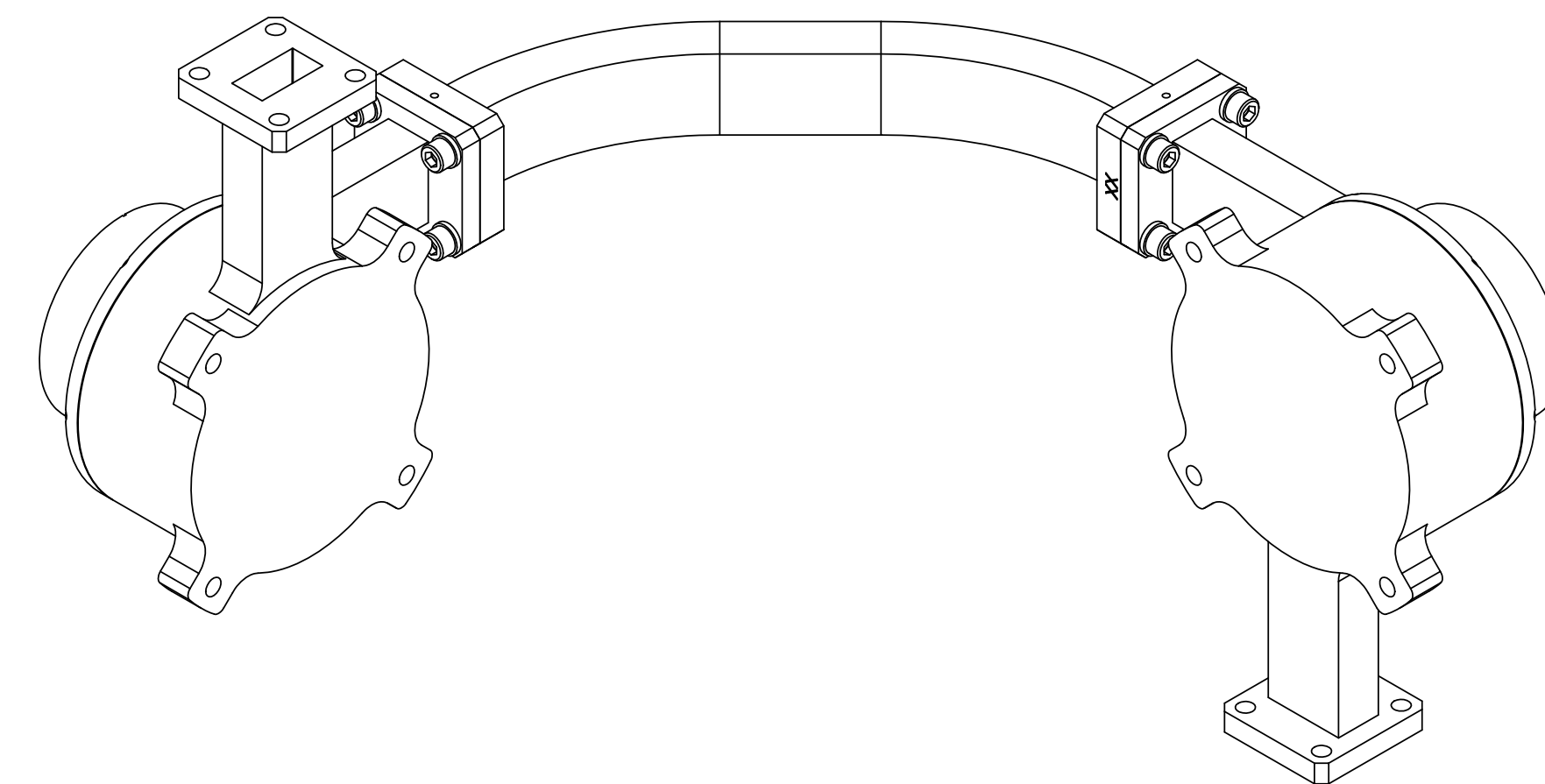
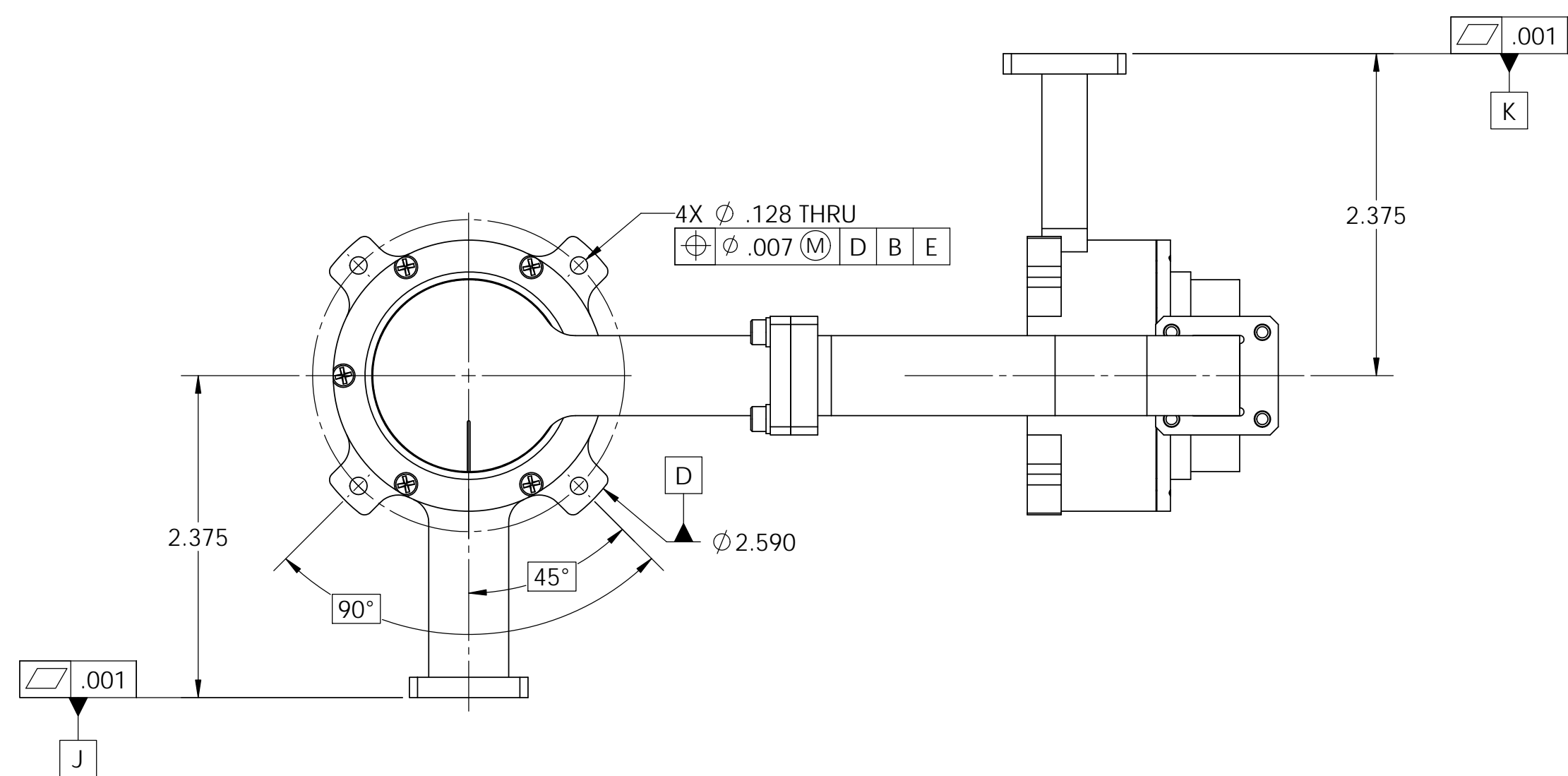
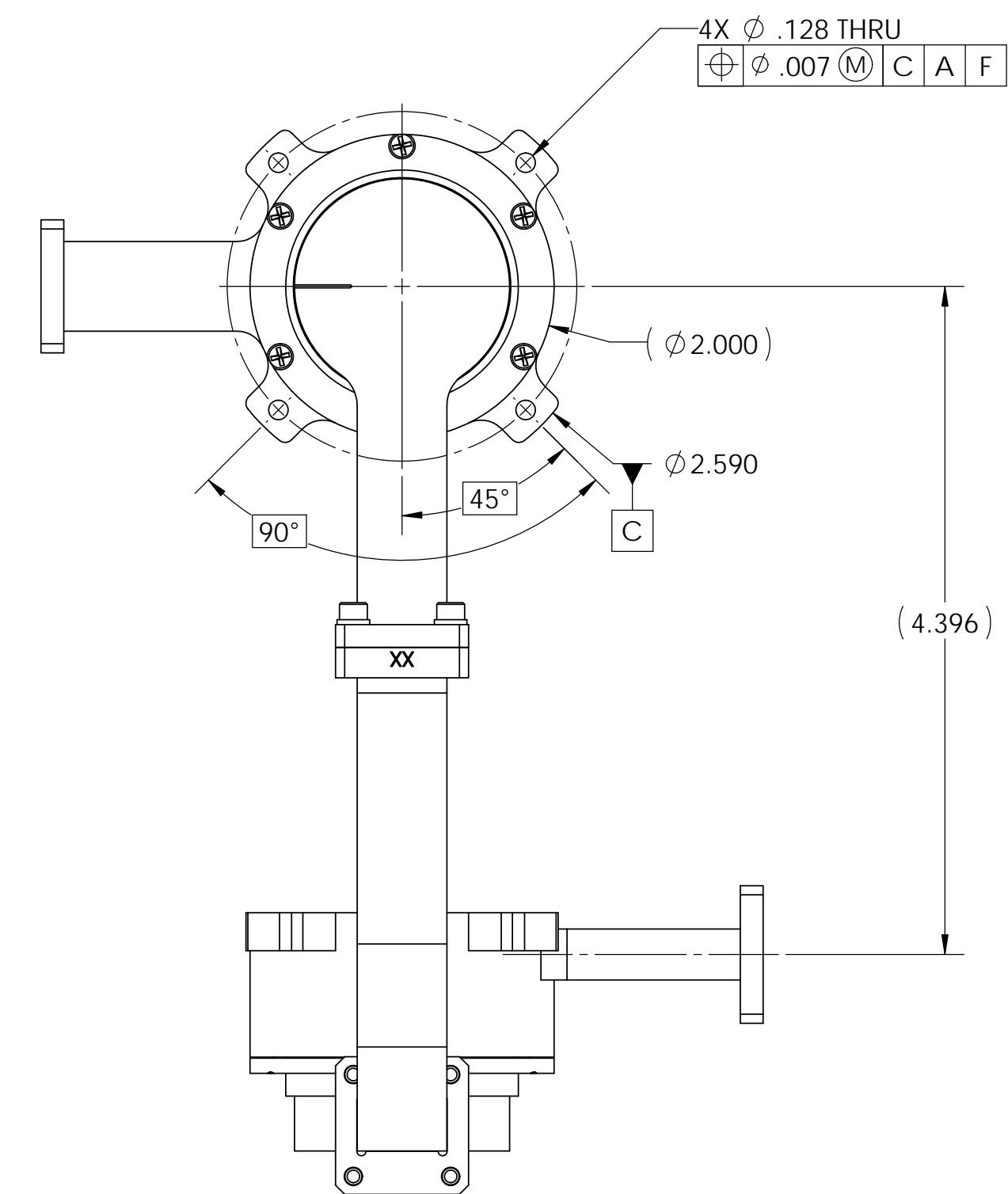
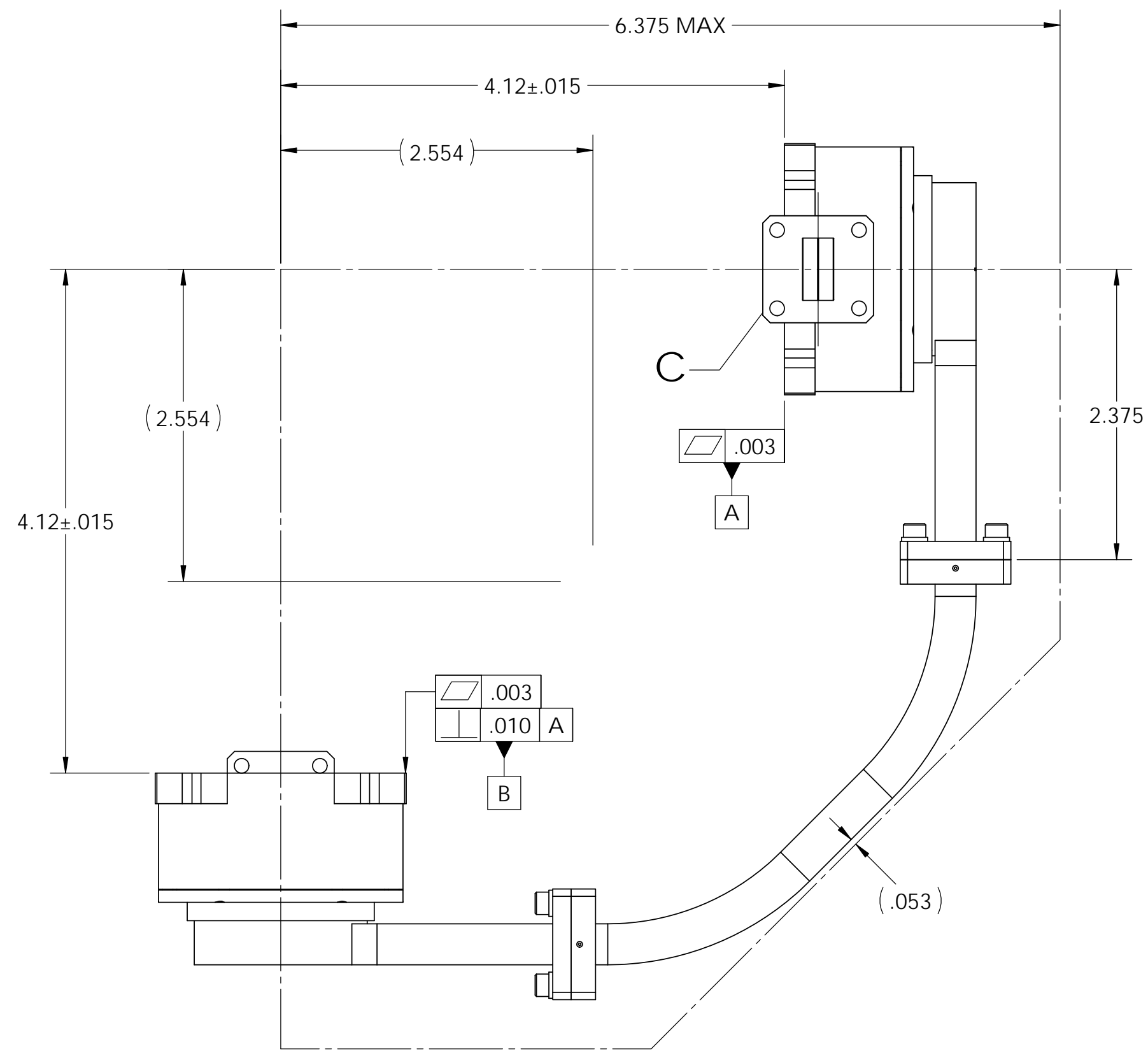


DETAIL C
SCALE 2 : 1



VIEW B
SCALE 2 : 1



DESIGN SPECIFICATIONS

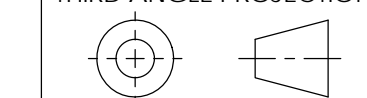
ELECTRICAL CHAN.1

FREQUENCY (GHz) :	20.2 - 21.2
VSWR (MAX) :	1.50:1
INSERTION LOSS (MAX) :	0.65 dB
PHASE WOW (deg) :	15.0 PK to PK
POWER :	146 W

MECHANICAL & ENVIRONMENTAL

ROTATIONAL SPEED :	0.85 deg/sec
TEMPERATURE, OPERATING :	-34° C TO +90° C
TEMPERATURE, STORAGE :	-52° C TO +90° C
FRICTION TORQUE :	40 IN-OZ MAX.
WEIGHT :	1.25 LBS MAX
MATERIAL :	ALUMINUM ALLOY PRIMARILY

THIRD ANGLE PROJECTION



DIMENSIONS ARE IN INCHES.
REMOVE ALL BURRS AND
SHARP EDGES .005 MAX.
UNLESS OTHERWISE
SPECIFIED. SURF. FINISH 63
TOLERANCES ARE:
FRACTIONS DECIMALS ANGLES
±1/64 ±.005 ±10°
±.010 ±.010 ±10°
INTERPRET DIMENSIONS &
TOLERANCES PER ASME Y14.5M

DIAMOND ANTENNA & MICROWAVE CORP
LITTLETON, MA 01460

TITLE: **R/J, 1-CH, DUAL AXIS, WR-51**

SIZE: **D** CAGE CODE: **01882** DRAWING NUMBER: **CAT 25-1000-0**

SCALE: **1:1** WEIGHT (EST.): SHEET **1 OF 2**